

Cl.150 RF Sch.40, flange ASME B16.5
DN100 4"

First Angle Projection XX.X [x.xx] = mm [inch]

Disclaimer:

Every reasonable effort has been made to ensure the accuracy of the information contained in this document. Endress+Hauser does not give any guarantee, express or implied, with respect to the accuracy, the completeness or the technical or commercial usefulness of this document.

Endress+Hauser may modify or replace this document at any time.

©11.10.2022 Endress+Hauser

Order Code :

7F2C1H-C2ACCADCACAAASKA1+DJZ1

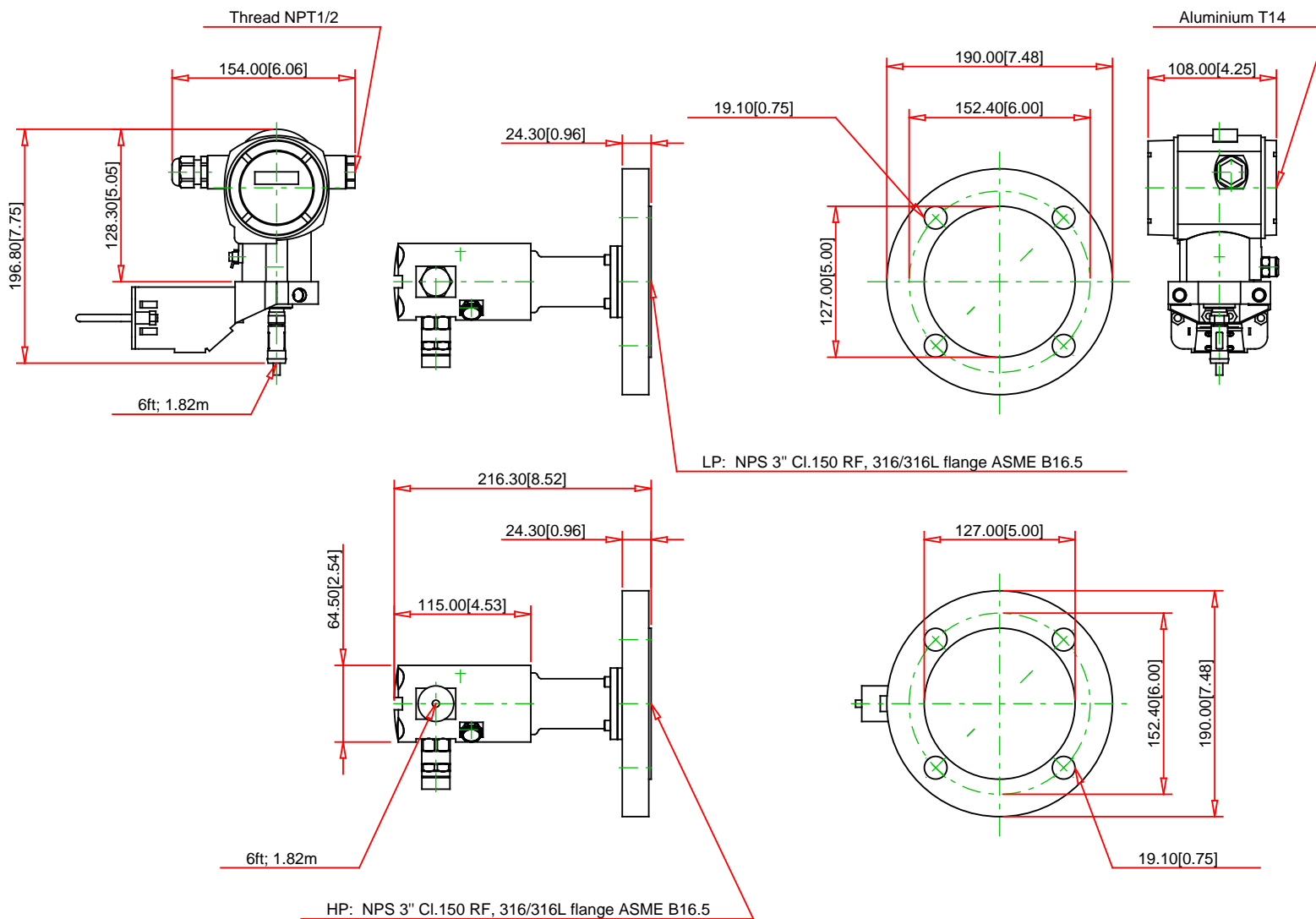
Product Description :

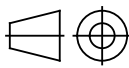
Prowirl F 200, 7F2C1H, DN100 4"

www.addresses.endress.com

Endress+Hauser 

People for Process Automation





 First Angle Projection XX.X [x.xx] = mm [inch]

Disclaimer:

Every reasonable effort has been made to ensure the accuracy of the information contained in this document. Endress+Hauser does not give any guarantee, express or implied, with respect to the accuracy, the completeness or the technical or commercial usefulness of this document.

Endress+Hauser may modify or replace this document at any time.

©11.10.2022 Endress+Hauser

Order Code :

FMD71-FA24AAD1H1HGKBCBCAGJAGJA+Z
1

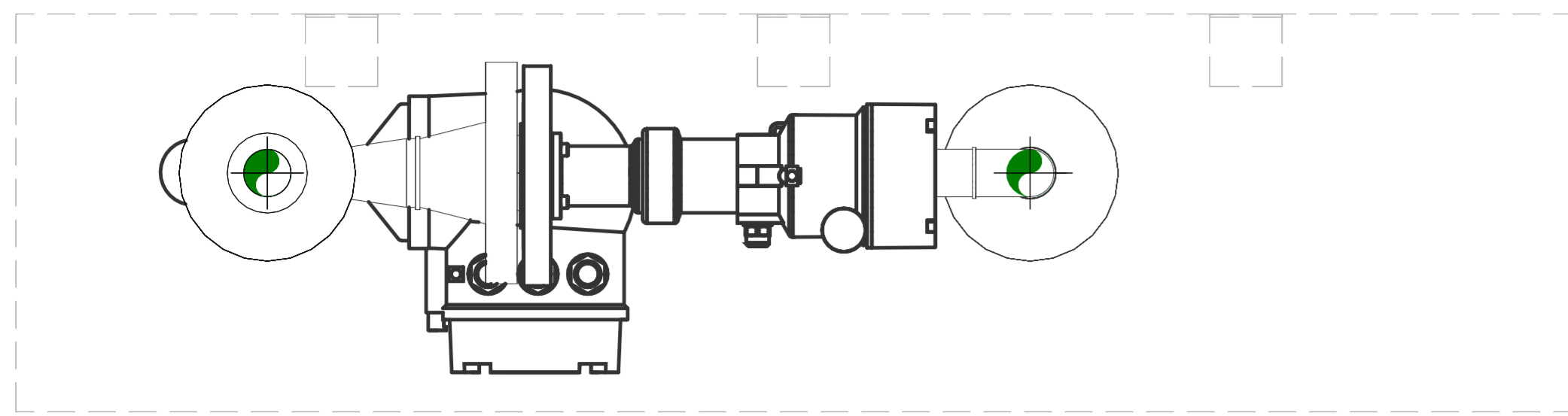
Product Description :

Deltabar FMD71

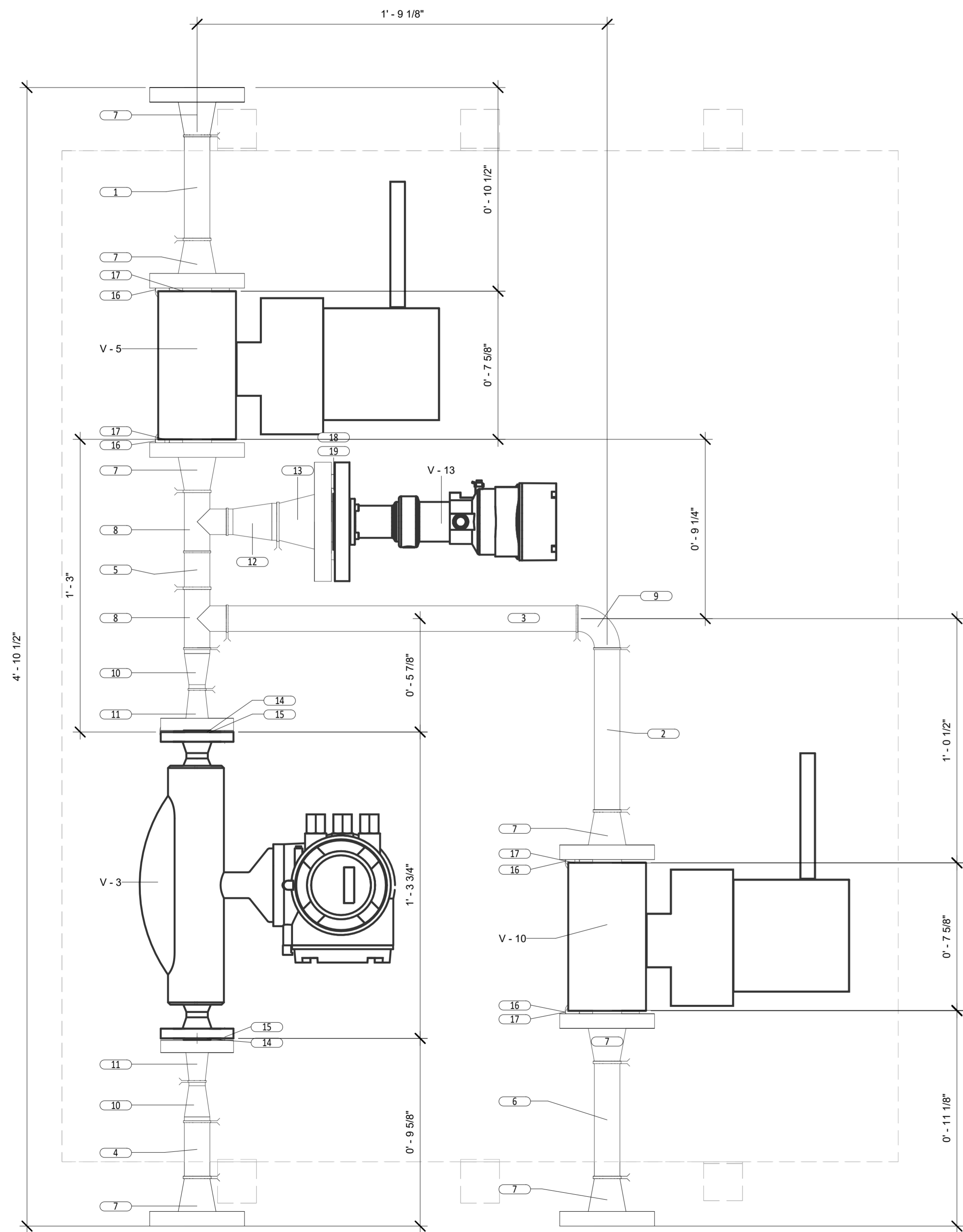
www.addresses.endress.com

Endress+Hauser 

People for Process Automation



① PLAN VIEW
3" = 1'-0"



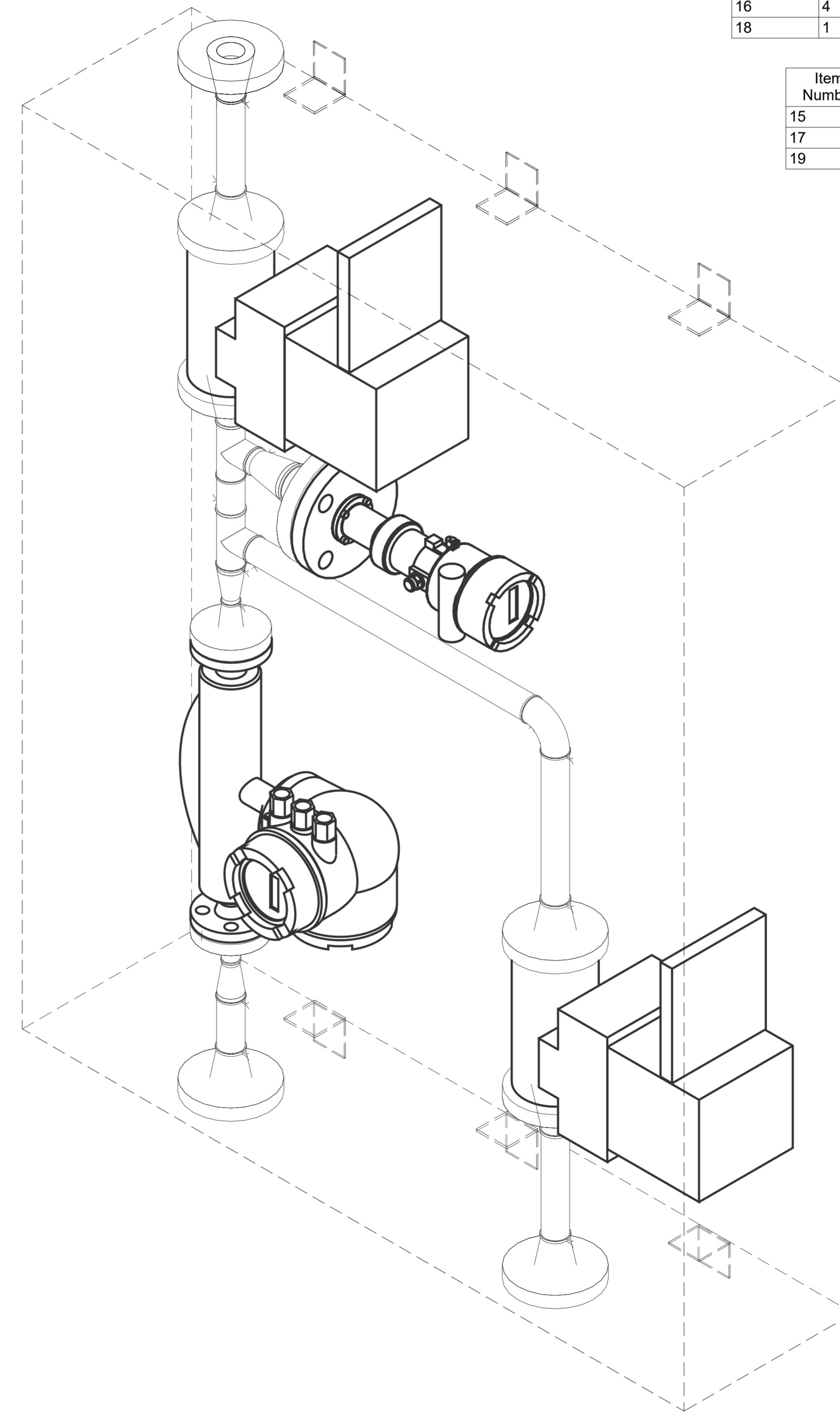
② PIPING - FRONT VIEW
3" = 1'-0"

Item #	Qty	Size	Length	Pipe Description	Connector 1	Connector 2	Material	OEM
1	1	1"	0' - 5 1/4"	A269 ERW Sch40 304L Stainless Steel Pipe PE	Bevel End 37.5	Bevel End 37.5	Stainless Steel	
2	1	1"	0' - 8 1/4"	A269 ERW Sch40 304L Stainless Steel Pipe PE	Bevel End 37.5	Bevel End 37.5	Stainless Steel	
3	1	1"	1' - 5 7/8"	A269 ERW Sch40 304L Stainless Steel Pipe PE	Bevel End 37.5	Bevel End 37.5	Stainless Steel	
4	1	1"	0' - 2 3/4"	A269 ERW Sch40 304L Stainless Steel Pipe PE	Bevel End 37.5	Bevel End 37.5	Stainless Steel	
5	1	1"	0' - 1 3/4"	A269 ERW Sch40 304L Stainless Steel Pipe PE	Bevel End 37.5	Bevel End 37.5	Stainless Steel	
6	1	1"	0' - 5 3/4"	A269 ERW Sch40 304L Stainless Steel Pipe PE	Bevel End 37.5	Bevel End 37.5	Stainless Steel	

Item #	Qty	Size	Fitting Description	Material	OEM
7	7	1	SS304L 300# RF WN Flange Sch40S	Stainless Steel	
8	2	1	SS304L Straight Tee Sch40S	Stainless Steel	
9	1	1	SS304L 90 LR Elbow Sch40S	Stainless Steel	
10	2	1x1/2	SS304L Concentric Reducer Sch40S	Stainless Steel	
11	2	1/2	SS304L 300# RF WN Flange Sch40S	Stainless Steel	
12	1	1-1/2x1	SS304L Concentric Reducer Sch10S	Stainless Steel	
13	1	1-1/2	SS304L 300# RF WN Flange Sch40S	Stainless Steel	

Item Number	Qty	Size	Fitting Description	OEM
14	2	1/2	Table 1 - Style CG Class 300 Gasket	Flexitallic
16	4	1	Table 1 - Style CG Class 300 Gasket	Flexitallic
18	1	1-1/2	Table 1 - Style CG Class 300 Gasket	Flexitallic

Item Number	Qty	Size	Fitting Description	OEM
15	2	1/2	B7-D-L0250 300# Stud Bolt Set CrMo	Ferguson
17	4	1	B7-D-L0250 300# Stud Bolt Set CrMo	Ferguson
19	1	1-1/2	B7-D-L0250 300# Stud Bolt Set CrMo	Ferguson



③ ISOMETRIC VIEW

NO. FOR FABRICATION REVIEW
A

REVISION:
A

DATE: 03/08/24
BY: JF

LEAK DETECTION PIPING IN PANEL

File:

Designer: MMS

Drawn By:

Reviewed By:

Scale: 3" = 1'-0"

Date: 03/08/24

Job Number:

Revision: A

MF100
Drawing Number:

ALL DIMENSIONS AND ALL DESIGN DETAILS, INSTRUCTIONS AND DEVELOPMENT COVERED HEREIN ARE CONFIDENTIAL AND PROPRIETARY TO AECOM AND/OR AECOM COMPANY, INC. WHICH RESERVES ALL PATENT OR OTHER RIGHTS HERE TO AND TO THE EXTENT PERMITTED BY LAW, SHALL NOT BE REPRODUCED, COPIED, DISSEMINATED, OR IN ANY MANNER USED WITHOUT THE EXPRESS WRITTEN CONSENT OF AECOM MECHANICAL, INC. WHEN REQUESTED, ALL SUCH COPIES SHALL BE RETURNED TO THE ORIGINAL SOURCE. COPYRIGHT 2023 AECOM MECHANICAL, INC. / COMFORT SYSTEMS USA. ALL RIGHTS RESERVED.

SCALED FOR SHEET SIZE: ARCH D (24"x36")