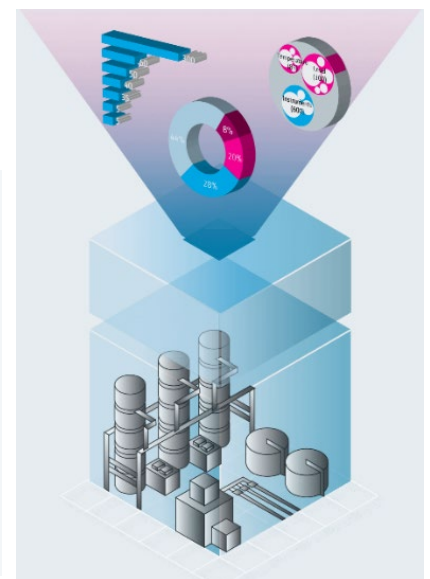
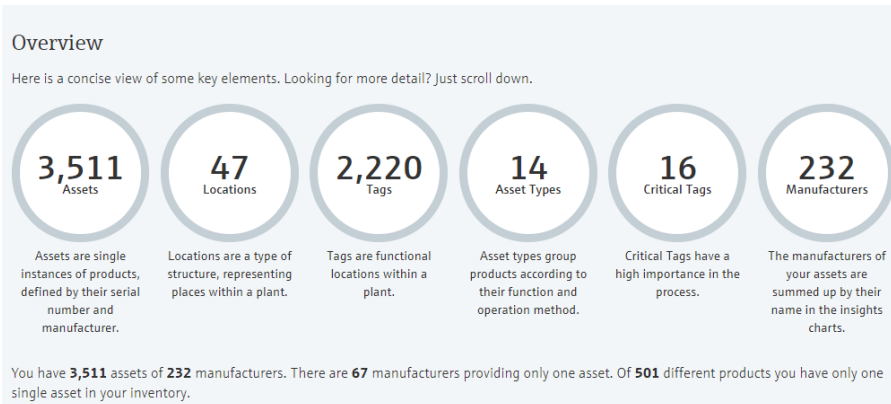


Commissioning Services

All or part of this scope below can be included in the offering from Endress+Hauser to meet the customer's needs and requirements.


- Automatic Three-Year Extended Warranty on all Endress+Hauser devices commissioned by Endress+Hauser certified technicians.
- Netilion Digital Commissioning App USA Package which provides a suite of web applications, data analysis and reporting services for an efficient plant startup on field instrumentation. This package is utilized within Endress+Hauser proposed Commissioning Services, providing digital capabilities from project phases all the way through operation and maintenance turnover.
- ***Digital Commissioning App Administrator Access for the Customer's Project Team, Construction Team, and Operations Managers throughout commissioning phase for visibility of startup completion progress.***
- Netilion Analytics & Library License for asset obsolescence management and project files and documents (startup forms, verification reports, configuration reports manuals, etc.). Creates a digital twin of the asset for maintenance and operations teams.
<https://netilion.endress.com/library>
- Pre-loading assets to the Netilion cloud database of all identified E+H and third-party devices. Netilion product support and training by E+H Technical Support Team.

General Install Base Analysis KPI Dashboard:



Pre-Commissioning Activities can include:

- Check Tag Number
- Visual Inspection
- Stage for Service Technician (Location Info for Tech/Contractor)
- Bench test instruments and valves
 - Power device and basic check for any issues or faults
 - Check Instrument or Valve for correct operation and/or travel
- All activities will be documented within E+H's Digital Commissioning Application for transparency and visibility of project execution.



Field Xpert SMT70 with Digital Commissioning App

15%

productivity gain
from digital
transformation
projects*

Proper commissioning is essential to handle critical factors during the start-up phase.

Utilizing Endress+Hauser's commissioning services allows you to achieve long-term operational benefits regardless of the scale and location of your facility.

©Endress+Hauser

Onsite Commissioning Activities can include:

- Verify instrument or valves are installed correctly
- Ensure your process measurement is set up according to your application conditions
- Guarantee critical factors such as time, resources, and key skills availability during start-up
- Obtain detailed commissioning documentation including baseline reports and backup files
- Loop testing & Troubleshooting
- Pictures of installations and devices
- All activities will be documented within E+H's Digital Commissioning Application for transparency and visibility of project execution.
 - Upload documentation to E+H Database, Netilion, for Digital documentation hand-over at completion.



Digitize
documentation to
ease workflows.

